

NEWS/EVENTS



LSU Graduates Record Numbers During Spring Ceremony

This was a groundbreaking year for LSU conferring a record number of degrees during the university's spring commencement. At the main spring ceremony, 3,953 students received degrees, which is the largest amount of degrees awarded at a single commencement surpassing May 2012's 3,824 students. The College of Science contributed 361 graduates to the record-breaking total--314 bachelor's degrees, 25 master's degrees, and 22 PhDs.

Interim Dean Guillermo Ferreyra presided over the College of Science diploma ceremony held Friday May 16 at 9 am in the Maddox Field House. This year's commencement speaker was Kevin Carman, executive vice president and provost of the University of Nevada, Reno. The ceremony was streamed live on the College of Science web site. You can view it [HERE](#).

▶▶ More



Get a Jump Start on College with BIOS 2014

The College of Science is gearing up for the 2014 session of its successful Biology Intensive Orientation for Students, or BIOS, August 10-15. This one-week intensive program is designed specifically for incoming biological sciences majors and any other freshmen whose majors require them to take Biology 1201 (Biology for Science Majors). BIOS is an excellent opportunity for incoming students to meet their peers and interact with graduate students and faculty members in social, work, and research environments prior to the beginning of classes. The fee for each participant is \$450, which includes the full Sunday through Friday program, meals, the textbook, and a "clicker" (student response handset), itself a \$200 value. A housing option is available at additional cost. Students must be enrolled in BIOL 1201 in the fall semester to participate. The deadline to register for BIOS 2014 is **JULY 14**.

▶▶ More

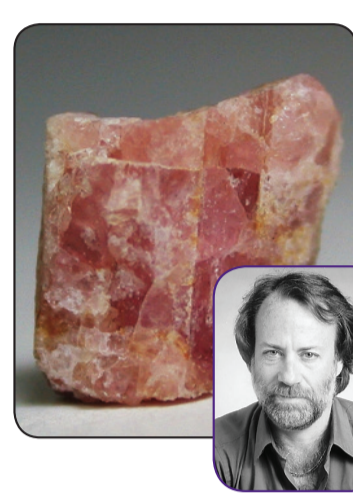


College of Science Occupies New Digs

Administrative offices for the LSU College of Science have relocated to a newly renovated space on the first floor of Hatcher Hall, suite 124. This space includes the Office of the Dean and the Office of Student Services. The development and communications offices will move to the second floor of Hatcher later this summer. The Office of Undergraduate Research and IT Services will remain in their current location on the second floor.

The lobby of Hatcher Hall has been closed since May 12 as further renovations are completed, and will remain closed for approximately two months. Faculty, staff, students and visitors to the College of Science offices should enter Hatcher Hall on the side of the building near Johnston Hall, or use the rear entrance accessing the basement and elevators of Hatcher Hall.

KUDOS

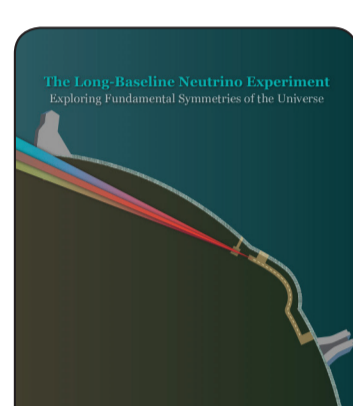


New Mineral Species Named in Honor of LSU Geology Professor

A new species of tourmaline, discovered by geologists in the Czech Republic, has been named "darrellhenryite" in honor of LSU Campanile Charities Professor of Geology & Geophysics **Darrell Henry** for his significant contributions to the mineralogy and petrology of the tourmaline supergroup minerals.

This new mineral species was discovered in a quarry at Nová Ves near Český Krumlov, Czech Republic. The mineral was further characterized by crystallographers from the University of Vienna and California Institute of Technology.

▶▶ More



T2K Collaborative Releases Science Book

LSU Department of Physics Professors **Thomas Kutter** and **Martin Tzanov**, and Professor Emeritus **William Metcalf**, along with graduate and undergraduate students, have been working for several years on an experiment in Japan called T2K, or Tokai to Kamioka Long Baseline Neutrino Oscillation Experiment, or LBNE, which studies the most elusive of fundamental subatomic particles – the neutrino. On April 28th, the collaboration released a comprehensive 300 page document on the LBNE highlighting the group's vision for the science, its potential for transformative discovery, its current advanced state of technical development and planning, and its alignment with the national high-energy physics program.

▶▶ More

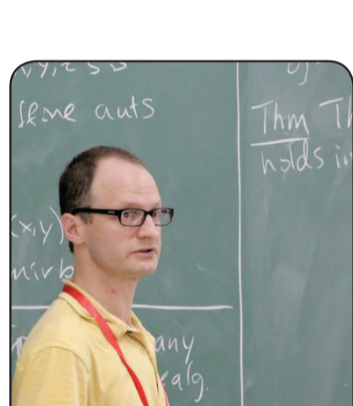


LSU Mathematics Department Hosts Ord 2014

James Madden, the Patricia Hewlett Bodin Distinguished Professor of Mathematics, and Charles Delzell, mathematics professor and associate chair for instruction, hosted the Conference on Ordered Algebraic Structures, May 1 - 3, in the Louisiana Emerging Technology Center.

Conference participants included mathematicians and scientists from the University of South Africa, the University of Saskatchewan in Saskatoon, Canada, and universities throughout the U.S.

▶▶ More

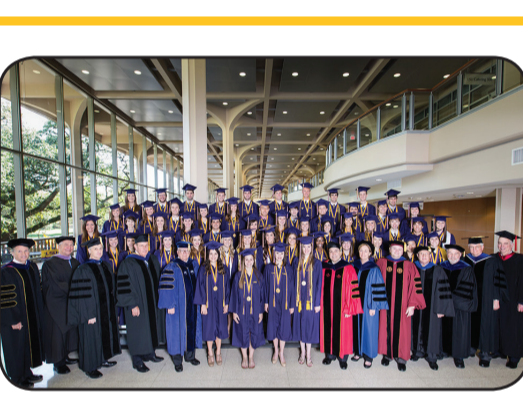


Faculty Profile: Math Professor Milen Yakimov

Faculty in the LSU College of Science consists of educators and researchers who are committed to providing a world-class educational experience. A member of this stellar community is Professor of Mathematics **Milen Yakimov**. Yakimov received a bachelor's degree from Sofia University in his native Bulgaria and later earned a doctoral degree from the University of California at Berkeley. His research interests focus on non-commutative algebra and its relations to Lie Theory, combinatorics, and Poisson geometry. The mathematician has been the recipient of numerous grants and awards, including a Sloan Research Fellowship. He has 208 citations by 97 authors in MathSciNet. Yakimov gave an invited address at the American Mathematical Society Meeting at Tulane University in 2012 and he is a recipient of the 2011 LSU Rainmakers Mid-Career Scholar Award.

▶▶ More

STAR SCHOLARS



May 2014 University Medalists

LSU Recognizes Graduates with the Highest GPAs

Fifty-three graduates received University Medals for finishing with the highest grade point averages in the spring 2014 class. Twenty-one of the medalists graduated from the College of Science.

The May 2014 class also included a Truman Scholar, a Udall Scholar, four members of the 2014 LSU Leadership Class, this year's homecoming queen, and the LSU Phi Kappa Phi Outstanding Senior. More than 30 percent of the class graduated with Latin Honors, and 25 percent will be entering medical or dental school in the fall.

▶▶ More



Katie Moreaux (far right), spring biochemistry graduate, giving a Liquid Nitrogen ice cream chemistry demonstration at Plaquemine High School

Katie Moreaux Receives Distinguished Communicator Honor

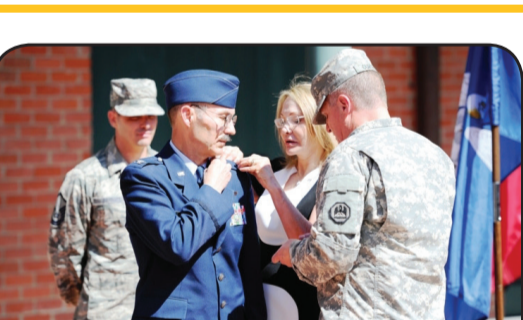
The LSU Distinguished Communicator Program, a branch of Communication Across the Curriculum (CxC), bestowed the honor of Distinguished Communicator on recent biochemistry graduate, **Katie Moreaux**.

Moreaux admits to being shy before she enrolled in the Distinguished Communications Program and attributes the program to helping her come out of her shell.

"I now feel comfortable talking in formal presentations and I felt a sense of pride after completion of the program," said Moreaux.

▶▶ More

ALUMNI



NEW ORLEANS – Newly promoted Air Force Brig. Gen. Charles Chappuis, assistant adjutant general – Air, assists his wife, Cynthia, with support from Army Maj. Gen. Glenn H. Curtis with the official "pinning" of his one-star insignia. (U.S. Air Force photo by Master Sgt. Daniel Farrell, 159th Fighter Wing, Louisiana National Guard/RELEASED)

College of Science Alum Promoted to Brigadier General

Col. Charles Chappuis, graduate of the LSU College of Science and the LSU School of Medicine, was promoted to the rank of Brigadier General during a May 4 ceremony at the Jackson Barracks Museum. Chappuis served four tours in support of Operation Iraqi and Enduring Freedom, led the 159th Medical Group in the relief effort at the Louisiana Superdome following Hurricane Katrina, and served as Medical Commander in Belle Chasse caring for all military forces stationed in the area following Hurricane Katrina.

He has been the Louisiana Air National Guard state surgeon for the past five years (a position normally held by an Army medical officer) making him the only Air Force state surgeon among the 54 states and territories.

▶▶ More

DEVELOPMENT



Students Celebrate Their Academic Success During Annual Taylor Scholars Dinner

Phyllis Taylor and her late husband, Patrick F. Taylor, have supported the academic growth of countless undergraduates including a select group of entering students and engineering undergraduates. On April 29, these students had an opportunity to dine with Mrs. Taylor at Juban's in Baton Rouge, to celebrate the close of a academic year and express their gratitude for the investment in their academic success. The College of Science has had numerous students to benefit from the Taylor Scholarship. Our current scholars are chemistry majors Kyle Deville, Andrew Galatas, Charles Halliburton, and Carl Sabottke; and geology majors Shane Cone and Lindsay Prothro.

NEW DEAN'S GIRL MEMBERS

The College of Science would like to welcome the newest members of the Dean's Circle. Thank you for your contribution to the teaching and research activities in the College of Science.

- Wayne & Heike Newhauser, March 2014
- Edward P. Nixon, April 2014
- Liangang & Lei Ye, May 2014

▶▶ [Click here for a complete list of DC members](#)

Support Research and Scholarship at LSU

Join the LSU College of Science

DEAN'S CIRCLE

The Dean's Circle (DC) is a loyal group of alumni and friends who share a passion for advancing scholarship and research at LSU. DC members are playing an ever-increasing role in supporting the college's **Formula for Excellence** Strategic Plan. Our DC provides the working capital needed to fund pursuits of the College including, but not limited to:

- scholarships for first-time freshmen to attend pre-college boot camps,
- student organizations and educational travel expenses,
- faculty recruitment and recognition activities, and
- development initiatives that build alumni and community relations.

Dean's Circle membership recognizes the generosity of alumni and friends who make annual gifts of \$1,000 or more to the Science Development Fund. Members enjoy invitations to events hosted by the college, including the annual Dean's Circle dinner and Hall of Distinction Ceremony, special communications from the dean throughout the year, and opportunities to meet and network with college leadership and other members.

To join by mail, make your check payable to "LSU Foundation-Science Dean's Circle" and mail your check to: LSU Foundation, 3838 West Lakeshore Drive, Baton Rouge, LA 70808

To donate online go to www.lsufoundation.org/givetoscience.

CONTACT US:

For more information on the Dean's Circle, please contact Adrian Owen, aowen@lsu.edu, 225.578.5100.

▶▶ To submit news items for the upcoming **College of Science E-News**, e-mail djenkins1@lsu.edu

▶▶ **GIVE** to the College of Science

▶▶ **LIKE US** on facebook