

LESSON 1: INSECTS UP CLOSE

INSECTS: Insects are all around us, and include some amazing animals like ants, butterflies, lady bugs, and cockroaches.

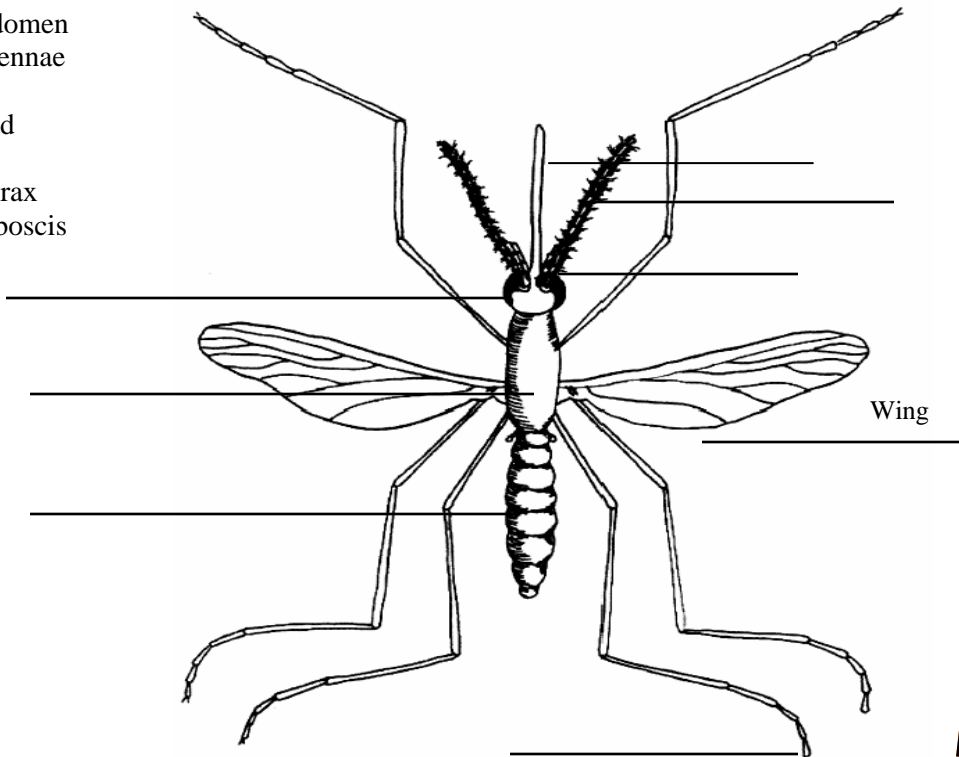
Mosquitoes, which we will be learning about today, are insects. All **adult** insects have these same things in common:

- They all have **6** legs
- They all have **3** body segments, (head, thorax, and abdomen)
- Adults have **2** compound eyes
- They all have **2** antennae
- They have a hard shell on the outside of their body called an **“exoskeleton”**

FIND AND LABEL THESE ON THE MOSQUITO

WORD BANK:

Abdomen
Antennae
Eye
Head
Leg
Thorax
Proboscis



Vocabulary

Head: The first segment an insect, that contains the eyes and mouth

Thorax: The second segment of an insect, that contains the legs and wings

Abdomen: The third segment of an insect that contains the digestive and reproductive organs

Proboscis: a long, tube like structure used for sucking up blood and nectar

INSECTS UP CLOSE:

Your teacher will plug in the digital microscope and show you various insects. Try to answer the following questions, as you look at the insects up close.

Look at Male and Female Mosquitoes

Can you find the following body parts: Head, thorax, abdomen, proboscis, and wing? Point these out to the rest of the class.

Most insects have 4 wings. Flies are insects, but have only 2 wings. Take a closer look at the adult mosquito. Is the mosquito a fly?

How many legs does the mosquito have? How does this compare to other insects?

Look at the male and female adult anopheles mosquitoes. How can you tell the difference between the male and the female mosquito? (*Hint: look at the antenna*).

Look at slide of Mosquito Lifecycle

Can you find each of the stages of a mosquito? Egg - Larva - Pupa - Adult? Point these out to the rest of the class.

Do all 4 life stages of the mosquito look the same?

Where do each of these life stages live? (*Hint: air or water?*)

Insects go through metamorphosis (a change in appearance). This change can either be "COMPLETE", where the young and adult look completely different, or "GRADUAL", when the young and adult look similar. Which do you think the mosquito has?

Take a look at some other insects. Can you find something they have in common with a mosquito?