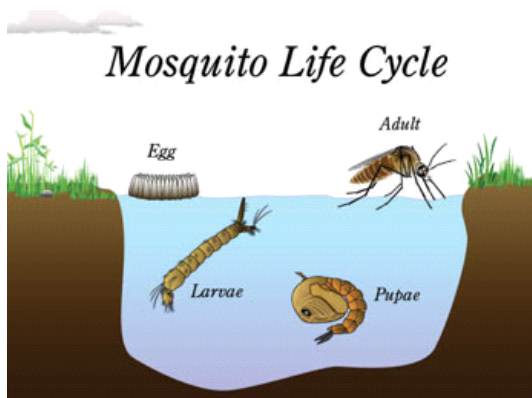
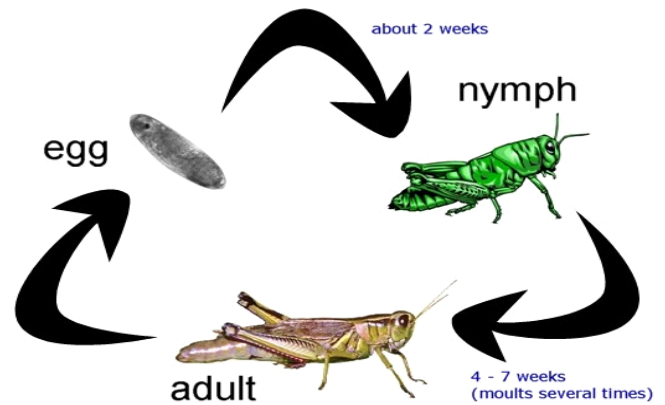


LESSON 2: THE LIFE CYCLE OF A MOSQUITO

MOSQUITO LIFECYCLE:

Insect **metamorphosis** (Definition: Change in Shape) occurs in two different ways, depending on the kind of insect. In the first type, "**gradual**" metamorphosis, the immature stage or nymph, looks similar to the adult stage. An example of this is the grasshopper lifecycle. Look at the grasshopper lifecycle. Notice how the grasshopper **gradually** gets bigger and bigger. Also, notice there is no pupal stage. With "**complete**" metamorphosis, the immature stage, or larvae, looks **completely** different from the adult stage. An example of this, is the mosquito.



The mosquito lifecycle has 4 stages, the egg, larva, pupa, and adult. The **egg** contains a growing embryo and the nutrients it needs before hatching. A mosquito **larva** hatches out of the egg and into water. The larva will feed on algae and small organisms. Sometimes the larva are called wigglers, because they are worm like and wiggle in the water. Although

the larva lives in water, it breathes through a long tube or siphon that reaches to the surface of the water. As the larva continues to grow, it molts 4 times. In the last molt it becomes a **pupa**. The pupa does not eat, but can swim to avoid predators. A few days later, the **adult** emerges from the pupa. Both the males and females will feed on nectar. Only the female ingests blood, which she needs for her eggs to develop.

Complete Metamorphosis: Often times when insects have complete metamorphosis, the different stages have different needs. What do each of these stages feed on? Where do they live? You have been given a container with the different stages. Observe the behavior and answer the questions.

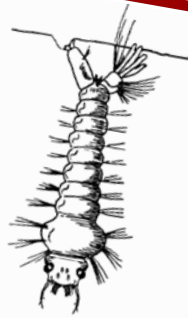
Vocabulary

Embryo: Development stage found inside an egg.

Metamorphosis: Change in shape.

Tumbler: common name of a mosquito pupa

Wiggler: Common name of mosquito larva.



Do I live in water or on land? _____

Do I eat? _____

What do I eat? _____

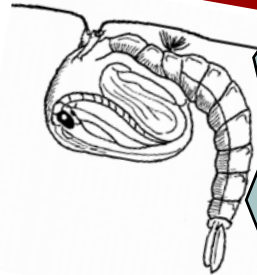
What stage am I? _____

Do I live in water or on land? _____

Do I eat? _____

What do I eat? _____

What stage am I? _____



Do I live in water or on land? _____

Do I eat? _____

What do I eat? _____

What stage am I? _____

Mosquito facts

Mosquitoes are attracted by carbon dioxide in our breath. They can detect this from great distances.

Some species of mosquitoes feed on the blood of amphibians (frogs).

Blood is needed to provide protein for egg formation.

Can you think of any other insects that have a similar lifecycle?

Which stages do you think would be easier to find? Why?

Do larvae and adults compete for food? How about larvae and pupae?

Which stages do you think would be easier to get rid of in your backyard?