

LSU
Deposit and Collateral Report
For the Quarter Ended June 30, 2023

Deposits Requiring Posting of Collateral:	Demand Deposit Sweep/MMA Repurchase	Certificates of Deposit	Total Deposits in Financial Institutions	Collateral (1)
LSU A&M, LSU Alexandria, LSU Eunice, LSU Shreveport, and LSU Health New Orleans				
Chase - LSU, Health Plan Premium	\$ 78,379,016		\$ 78,379,016	\$ 187,000,000
Cottonport Bank - LSU Ag Center	3,913,269		\$ 3,913,269	4,334,399
Capital One - LSU-A	10,896,788		\$ 10,896,788	10,646,788
St. Landry Bank - LSU-E	515,675		\$ 515,675	898,829
Campus Federal Credit Union - LSU-S		\$ 100,975	\$ 100,975	250,000
Capital One - LSU-S	37,563,592		\$ 37,563,592	38,054,091
Chase - HSCNO	106,826,284	18,600	\$ 106,844,884	150,000,000
Total	\$ 238,094,623	\$ 119,575	\$ 238,214,198	\$ 391,184,107
LSU Health Shreveport				
JPMC-Shreveport	\$ 74,535,699		\$ 74,535,699	\$ 122,942,869
JPMC-Shreveport Endowment Fds	3,868,729		3,868,729	
Total	\$ 78,404,428	\$ -	\$ 78,404,428	\$ 122,942,869
LSU Health Care Services Division				
JP Morgan Chase (HCSD)	\$ 88,514,138		\$ 88,514,138	\$ 105,250,000
Capital One (MCLNO Trust Fund)	5,572,032		\$ 5,572,032	5,678,472
Total	\$ 94,086,170	\$ -	\$ 94,086,170	\$ 110,928,472
Total Requiring Collateral	\$ 410,585,221	\$ 119,575	\$ 410,704,796	\$ 625,055,448
Deposits In Trust or Federal Obligations Not Requiring Collateral				
Federated Money Markets	\$ 9,254,901		\$ 9,254,901	
Federated Funds-Treas. Oblig. (2)			\$ -	
Total	\$ 9,254,901	\$ -	\$ 9,254,901	
Total Deposits	\$ 419,840,122	\$ 119,575	\$ 419,959,697	

- (1) Collateral amounts include FDIC coverage of \$250,000 on Demand Deposits, \$250,000 on CD's and \$250,000 by the National Credit Union Share Insurance Fund on deposits with Campus Federal Credit Union.
- (2) One Group & Federated Funds are no-load, open ended mutual funds investing in U.S. Treasury obligations.

LSU
Investment Summary
For the Quarter Ended June 30, 2023

Fund Description	As of 7/1/2022		As of 9/30/2022		As of 12/31/2022		As of 3/31/2023		As of 06/30/2023	
	Value	Cost	Market Value	Cost	Market Value	Cost	Market Value	Cost	Market Value	
Current Funds										
Cash/Sweeps	\$336,382,124	\$519,098,560	\$519,098,560	\$417,474,498	\$417,474,498	\$511,963,141	\$511,963,141	\$401,144,460	\$401,144,460	
Money Market Accounts/Repos	\$5,093	\$310,194	\$310,194	\$4,672,315	\$4,672,315	\$1,058,504	\$1,058,504	\$2,472,544	\$2,472,544	
Certificates of Deposit	\$100,537	\$100,553	\$100,553	\$100,683	\$100,683	\$100,705	\$100,705	\$100,975	\$100,975	
Treasury Notes	\$61,177,567	\$61,534,064	\$66,633,516	\$61,322,656	\$56,790,957	\$64,605,553	\$61,074,042	\$64,511,328	\$60,289,099	
CMO's	\$0	\$0	\$0	\$0	\$0	\$0	\$0	\$0	\$0	
Agency Securities	\$118,395,330	\$137,284,211	\$113,232,660	\$137,261,606	\$113,015,868	\$137,238,730	\$116,354,079	\$137,216,289	\$115,056,924	
Mortgaged Backed Securities	\$5,914,917	\$4,186,683	\$3,548,453	\$4,134,113	\$3,549,025	\$3,944,382	\$3,423,254	\$3,727,316	\$3,182,656	
Equity Securities	\$96,131	\$0	\$93,054	\$0	\$110,798	\$0	\$88,706	\$0	\$86,547	
Municipal Bonds	\$190,000,422	\$209,330,275	\$166,244,409	\$208,720,216	\$165,505,330	\$208,646,473	\$172,266,963	\$208,522,701	\$169,963,432	
Corporate Bonds	\$272,946,585	\$320,257,594	\$270,986,235	\$320,105,823	\$276,297,157	\$316,427,536	\$278,544,424	\$316,473,852	\$274,503,773	
Total	\$985,018,706	\$1,252,102,134	\$1,130,247,634	\$1,153,791,910	\$1,037,516,631	\$1,243,985,024	\$1,144,873,818	\$1,134,169,465	\$1,026,800,410	
Endowment Funds										
Cash/Sweeps	\$621,923	\$646,794	\$646,794	\$1,708,322	\$1,708,322	\$1,305,392	\$1,305,392	\$3,868,729	\$3,868,729	
Money Market Accounts/Repos	\$0	\$170,676	\$170,676	\$701,547	\$701,547	\$876,744	\$876,744	\$1,064,161	\$1,064,161	
Certificates of Deposit	\$18,600	\$18,600	\$18,600	\$18,600	\$18,600	\$18,600	\$18,600	\$18,600	\$18,600	
Agency Securities	\$2,147,143	\$2,481,905	\$2,004,391	\$2,481,905	\$1,974,595	\$2,481,905	\$2,037,035	\$2,481,905	\$2,028,457	
Mortgaged Backed Securities	\$1,029,208	\$1,027,911	\$975,030	\$1,022,757	\$970,479	\$1,003,370	\$966,000	\$998,214	\$948,575	
Equity Securities	\$8,436,131	\$4,420,020	\$8,023,843	\$4,420,020	\$8,434,925	\$4,420,020	\$8,969,084	\$4,420,020	\$9,517,525	
Mutual Funds	\$71,415,783	\$72,346,444	\$68,713,400	\$73,568,832	\$72,975,733	\$75,233,968	\$77,079,322	\$73,848,322	\$75,797,920	
Municipal Bonds	\$3,288,563	\$4,021,711	\$3,072,396	\$4,008,609	\$3,038,315	\$4,008,609	\$3,209,091	\$4,008,609	\$3,133,144	
Corporate Bonds	\$8,412,361	\$9,334,402	\$8,006,193	\$9,334,402	\$8,186,210	\$9,334,402	\$8,283,321	\$9,334,402	\$8,176,112	
Total	\$95,369,712	\$94,468,463	\$91,631,323	\$97,264,994	\$98,008,726	\$98,683,010	\$102,744,589	\$100,042,963	\$104,553,223	
Other Funds										
Cash/Sweeps	\$4,878,245	\$5,101,146	\$5,101,146	\$5,128,784	\$5,128,784	\$5,544,803	\$5,544,803	\$5,572,032	\$5,572,032	
Money Market Accounts/Repos	\$32,058,459	\$9,343,384	\$9,343,384	\$14,726,928	\$14,726,928	\$9,476,484	\$9,476,484	\$33,663,740	\$33,663,740	
Equity Securities	\$424,774	\$0	\$433,058	\$0	\$478,702	\$0	\$543,914	\$0	\$531,960	
Total	\$37,361,478	\$14,444,530	\$14,877,588	\$19,855,712	\$20,334,414	\$15,021,287	\$15,565,201	\$39,235,772	\$39,767,732	
Grand Total	\$1,117,749,896	\$1,361,015,127	\$1,236,756,545	\$1,270,912,616	\$1,155,859,771	\$1,357,689,321	\$1,263,183,608	\$1,273,448,199	\$1,171,121,365	
Deposits in Financial Institutions										
Total Cash/Sweeps/MMA/Repos	\$373,945,844	\$534,670,754	\$534,670,754	\$444,412,394	\$444,412,394	\$530,225,068	\$530,225,068	\$447,785,666	\$447,785,666	
Total Certificates of Deposit	\$119,137	\$119,153	\$119,153	\$119,283	\$119,283	\$119,305	\$119,305	\$119,575	\$119,575	
Total Deposits	\$374,064,981	\$534,789,907	\$534,789,907	\$444,531,677	\$444,531,677	\$530,344,373	\$530,344,373	\$447,905,241	\$447,905,241	
Other Investments										
Treasury Notes	\$61,177,567	\$61,534,064	\$66,633,516	\$61,322,656	\$56,790,957	\$64,605,553	\$61,074,042	\$64,511,328	\$60,289,099	
CMO's	\$0	\$0	\$0	\$0	\$0	\$0	\$0	\$0	\$0	
Agency Securities	\$120,542,473	\$139,766,116	\$115,237,051	\$139,743,511	\$114,990,463	\$139,720,635	\$118,391,114	\$139,698,194	\$117,085,381	
Mortgaged Backed Securities	\$6,944,125	\$5,214,594	\$4,523,483	\$5,156,870	\$4,519,504	\$4,947,752	\$4,389,254	\$4,725,530	\$4,131,231	
Equity Securities	\$8,957,036	\$4,420,020	\$8,549,955	\$4,420,020	\$9,024,425	\$4,420,020	\$9,601,704	\$4,420,020	\$10,136,032	
Mutual Funds	\$71,415,783	\$72,346,444	\$68,713,400	\$73,568,832	\$72,975,733	\$75,233,968	\$77,079,322	\$73,848,322	\$75,797,920	
Municipal Bonds	\$193,288,985	\$213,351,986	\$169,316,805	\$212,728,825	\$168,543,645	\$212,655,082	\$175,476,054	\$212,531,310	\$173,096,576	
Corporate Bonds	\$281,358,946	\$329,591,996	\$278,992,428	\$329,440,225	\$284,483,367	\$325,761,938	\$286,827,745	\$325,808,254	\$282,679,885	
Total Other	\$743,684,915	\$826,225,220	\$701,966,638	\$826,380,939	\$711,328,094	\$827,344,948	\$732,839,235	\$825,542,958	\$723,216,124	
Grand Total	\$1,117,749,896	\$1,361,015,127	\$1,236,756,545	\$1,270,912,616	\$1,155,859,771	\$1,357,689,321	\$1,263,183,608	\$1,273,448,199	\$1,171,121,365	
LSU Paid Campuses										
Current Funds										
Cash/Sweeps	\$188,159,751	\$349,883,428	\$349,883,428	\$234,682,517	\$234,682,517	\$325,498,459	\$325,498,459	\$238,094,623	\$238,094,623	
Money Market Accounts/Repos	\$5,093	\$310,194	\$310,194	\$4,672,315	\$4,672,315	\$1,058,504	\$1,058,504	\$2,472,544	\$2,472,544	
Certificates of Deposit	\$100,537	\$100,553	\$100,553	\$100,683	\$100,683	\$100,705	\$100,705	\$100,975	\$100,975	
Treasury Notes	\$11,914,062	\$9,920,313	\$8,582,422	\$9,920,313	\$8,675,391	\$9,920,313	\$8,880,859	\$9,920,313	\$8,714,844	
CMO's	\$0	\$0	\$0	\$0	\$0	\$0	\$0	\$0	\$0	
Agency Securities	\$109,397,025	\$127,557,347	\$104,664,739	\$127,557,347	\$104,405,291	\$127,557,347	\$107,564,845	\$127,557,347	\$106,383,465	
Mortgaged Backed Securities	\$5,903,653	\$4,174,748	\$3,537,414	\$4,122,349	\$3,538,271	\$3,932,781	\$3,412,628	\$3,715,877	\$3,172,212	
Equity Securities	\$96,131	\$0	\$93,054	\$0	\$110,798	\$0	\$88,706	\$0	\$86,547	
Municipal Bonds	\$172,021,285	\$191,101,175	\$150,438,374	\$190,595,575	\$149,680,896	\$190,595,575	\$156,138,701	\$190,595,575	\$154,080,067	
Corporate Bonds	\$232,883,367	\$278,328,509	\$232,011,398	\$278,328,509	\$237,192,783	\$278,253,801	\$242,576,564	\$278,374,529	\$238,861,720	
Total	\$720,480,904	\$961,376,267	\$849,621,576	\$849,979,608	\$743,058,945	\$936,917,485	\$845,319,971	\$850,831,783	\$751,966,997	
Endowment Funds										
Money Market Accounts/Repos	\$0	\$170,676	\$170,676	\$701,547	\$701,547	\$876,744	\$876,744	\$1,064,161	\$1,064,161	
Certificates of Deposit	\$18,600	\$18,600	\$18,600	\$18,600	\$18,600	\$18,600	\$18,600	\$18,600	\$18,600	
Agency Securities	\$2,147,143	\$2,481,905	\$2,004,391	\$2,481,905	\$1,974,595	\$2,481,905	\$2,037,035	\$2,481,905	\$2,028,457	
Mortgaged Backed Securities	\$1,029,208	\$1,027,911	\$975,030	\$1,022,757	\$970,479	\$1,003,370	\$966,000	\$998,214	\$948,575	
Equity Securities	\$8,415,888	\$4,412,370	\$8,005,602	\$4,412,370	\$8,414,891	\$4,412,370	\$8,949,885	\$4,412,370	\$9,499,759	
Municipal Bonds	\$3,288,563	\$4,021,711	\$3,072,396	\$4,008,609	\$3,038,315	\$4,008,609	\$3,209,091	\$4,008,609	\$3,133,144	
Corporate Bonds	\$8,412,361	\$9,334,402	\$8,006,193	\$9,334,402	\$8,186,210	\$9,334,402	\$8,283,321	\$9,334,402	\$8,176,112	
Total	\$23,311,763	\$21,467,575	\$22,252,888	\$21,980,190	\$23,304,637	\$22,136,000	\$24,340,676	\$22,318,262	\$24,868,808	
Other Funds										
Money Market Accounts/Repos	\$23,130,023	\$366,654	\$366,654	\$5,674,758	\$5,674,758	\$327,507	\$327,507	\$24,408,839	\$24,408,839	
Total	\$23,130,023	\$366,654	\$366,654	\$5,674,758	\$5,674,758	\$327,507	\$327,507	\$24,408,839	\$24,408,839	
Grand Total	\$766,922,690	\$983,210,496	\$872,241,118	\$877,634,556	\$772,038,340	\$959,380,992	\$869,988,154	\$897,558,883	\$801,244,644	

LSU
Investment Summary
For the Quarter Ended June 30, 2023

Fund Description	As of 7/1/2022	As of 9/30/2022		As of 12/31/2022		As of 3/31/2023		As of 06/30/2023	
	Value	Cost	Market Value	Cost	Market Value	Cost	Market Value	Cost	Market Value
LSU Health Shreveport									
Current Funds									
Cash/Sweeps S.	\$72,856,697	\$91,310,114	\$91,310,114	\$79,678,289	\$79,678,289	\$91,457,981	\$91,457,981	\$74,535,699	\$74,535,699
Cash/Sweeps	\$72,856,697	\$91,310,114	\$91,310,114	\$79,678,289	\$79,678,289	\$91,457,981	\$91,457,981	\$74,535,699	\$74,535,699
Treasury Notes	\$49,263,505	\$51,613,751	\$48,051,094	\$51,402,343	\$48,115,566	\$54,685,240	\$52,193,183	\$54,591,015	\$51,574,255
Agency Securities	\$8,998,305	\$9,726,864	\$8,567,921	\$9,704,259	\$8,610,577	\$9,681,383	\$8,789,234	\$9,658,942	\$8,673,459
Mortgaged Backed Securities	\$11,264	\$11,935	\$11,039	\$11,764	\$10,754	\$11,601	\$10,626	\$11,439	\$10,444
Municipal Bonds	\$17,979,137	\$18,229,100	\$15,806,035	\$18,124,641	\$15,824,434	\$18,050,898	\$16,128,262	\$17,927,126	\$15,883,365
Corporate Bonds	\$40,063,218	\$41,929,085	\$38,974,837	\$41,777,314	\$39,104,374	\$38,173,735	\$35,967,860	\$38,099,323	\$35,642,053
Total	\$189,172,126	\$212,820,849	\$202,721,040	\$200,698,610	\$191,343,994	\$212,060,838	\$204,547,146	\$194,823,544	\$186,319,275
Endowment Funds									
Cash/Sweeps	\$621,923	\$646,794	\$646,794	\$1,708,322	\$1,708,322	\$1,305,392	\$1,305,392	\$3,868,729	\$3,868,729
Equity Securities	\$20,243	\$7,650	\$18,241	\$7,650	\$20,034	\$7,650	\$19,199	\$7,650	\$17,766
Mutual Funds	\$71,415,783	\$72,346,444	\$68,713,400	\$73,568,832	\$72,975,733	\$75,233,968	\$77,079,322	\$73,848,322	\$75,797,920
Total	\$72,057,949	\$73,000,888	\$69,378,435	\$75,284,804	\$74,704,089	\$76,547,010	\$78,403,913	\$77,724,701	\$79,684,415
Grand Total	\$261,230,075	\$285,821,737	\$272,099,475	\$275,983,414	\$266,048,083	\$288,607,848	\$282,951,059	\$272,548,245	\$266,003,690
LSU HCSD									
Current Funds									
Cash/Sweeps	\$75,365,676	\$77,905,018	\$77,905,018	\$103,113,692	\$103,113,692	\$95,006,701	\$95,006,701	\$88,514,138	\$88,514,138
Total	\$75,365,676	\$77,905,018	\$77,905,018	\$103,113,692	\$103,113,692	\$95,006,701	\$95,006,701	\$88,514,138	\$88,514,138
Other Funds									
Cash/Sweeps	\$4,878,245	\$5,101,146	\$5,101,146	\$5,128,784	\$5,128,784	\$5,544,803	\$5,544,803	\$5,572,032	\$5,572,032
Money Market Accounts/Repos	\$8,928,436	\$8,976,730	\$8,976,730	\$9,052,170	\$9,052,170	\$9,148,977	\$9,148,977	\$9,254,901	\$9,254,901
Equity Securities	\$424,774	\$433,058	\$433,058	\$478,702	\$478,702	\$543,914	\$543,914	\$531,960	\$531,960
Total	\$14,231,455	\$14,077,876	\$14,510,934	\$14,180,954	\$14,659,656	\$14,693,780	\$15,237,694	\$14,826,933	\$15,358,893
Grand Total	\$89,597,131	\$91,982,894	\$92,415,952	\$117,294,646	\$117,773,348	\$109,700,481	\$110,244,395	\$103,341,071	\$103,873,031
System Total	\$1,117,749,896	\$1,361,015,127	\$1,236,756,545	\$1,270,912,616	\$1,155,859,771	\$1,357,689,321	\$1,263,183,608	\$1,273,448,199	\$1,171,121,365

* Negative balance in the cash/Sweeps section of the current funds does not represent an actual negative bank balance, rather it represents a timing difference of the allocation of the current funds.

** Small endowment funds at LSUS were moved to the LSUS Foundation to accommodate Workday.

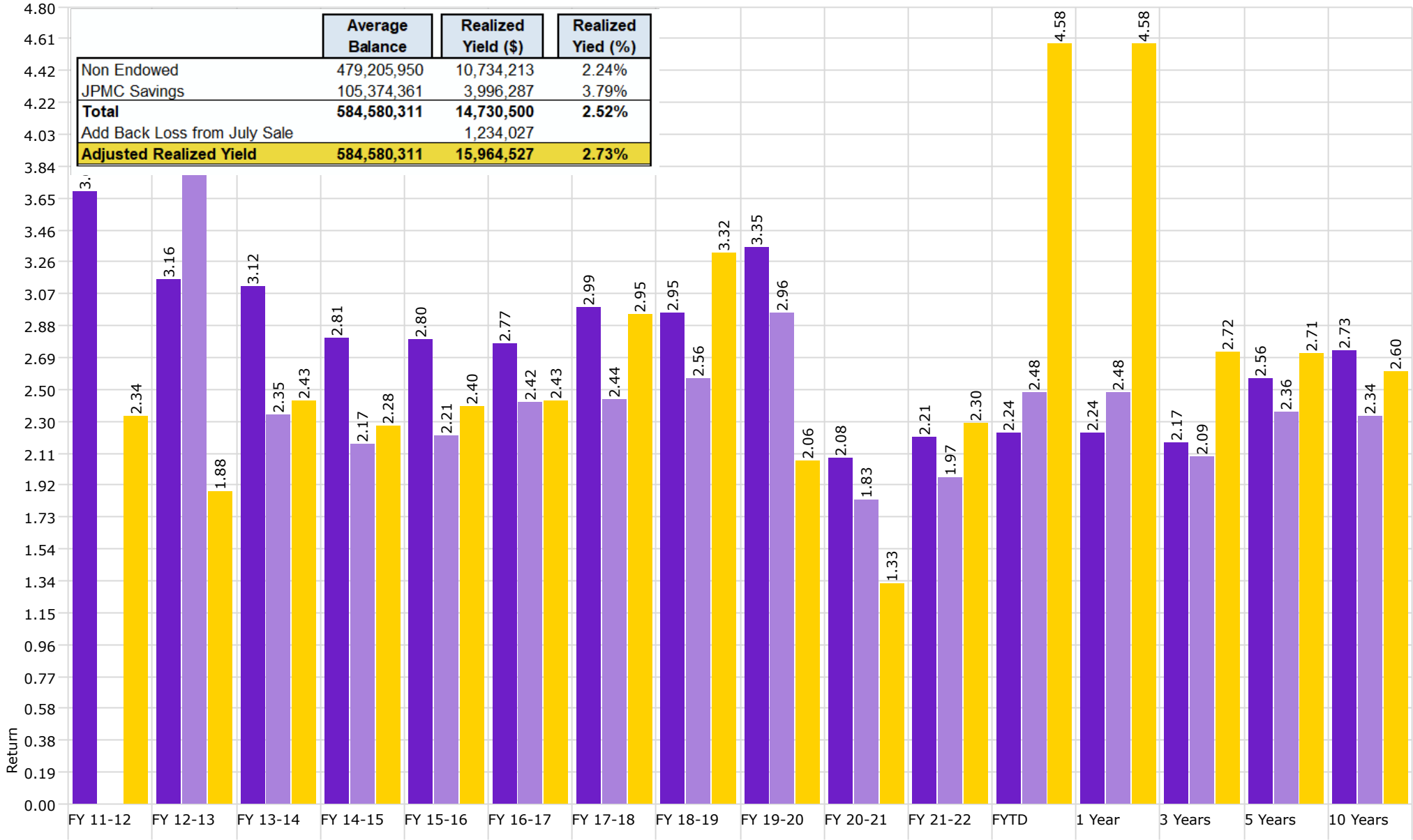
*** LSU Paid Campuses include the following: LSU, LSU Ag Center, LSUA, LSUE, LSUS, LSU Health New Orleans, and the LSU Pennington Biomedical Research Center.

Disclaimer: Pursuant to PM-9, corporate bonds/notes only available for investment beginning 7-1-2011.
Louisiana law provides for restrictions on maturity and allocation and may effect benchmark comparisons.



Investment Management Program Non Endowed Accounts **Realized Yield**

As of 6/30/2023



■ Non Endowed

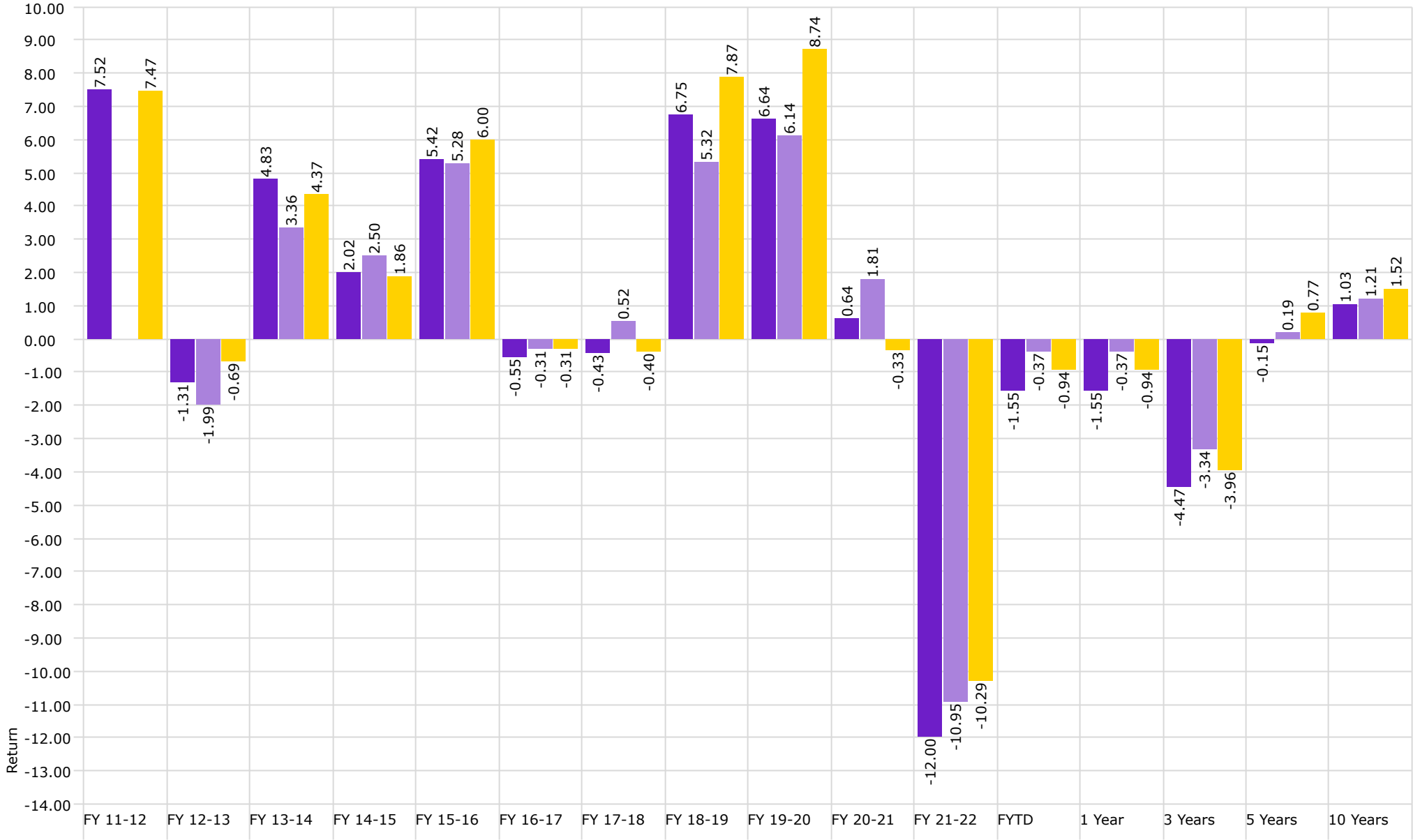
■ Health Plan

■ Barclays Aggregate Bond Index



Investment Management Program Non Endowed Accounts **Total Return**

As of 6/30/2023



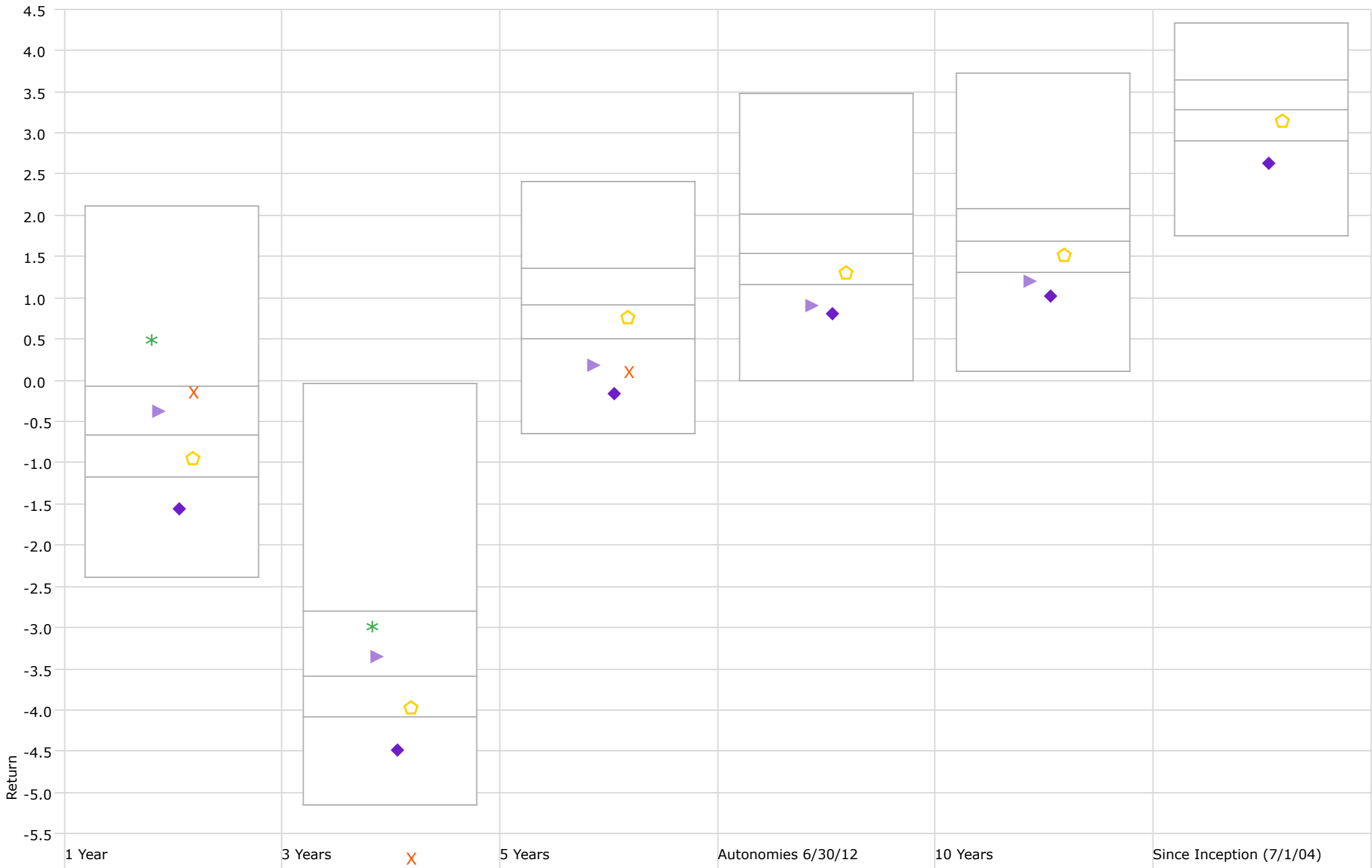
■ Non Endowed

■ Health Plan

■ Barclays Aggregate Bond Index

Performance Relative to Peer Group

Peer Group (5-95%): All Managed Investments - U.S. - Intermediate Core Bond

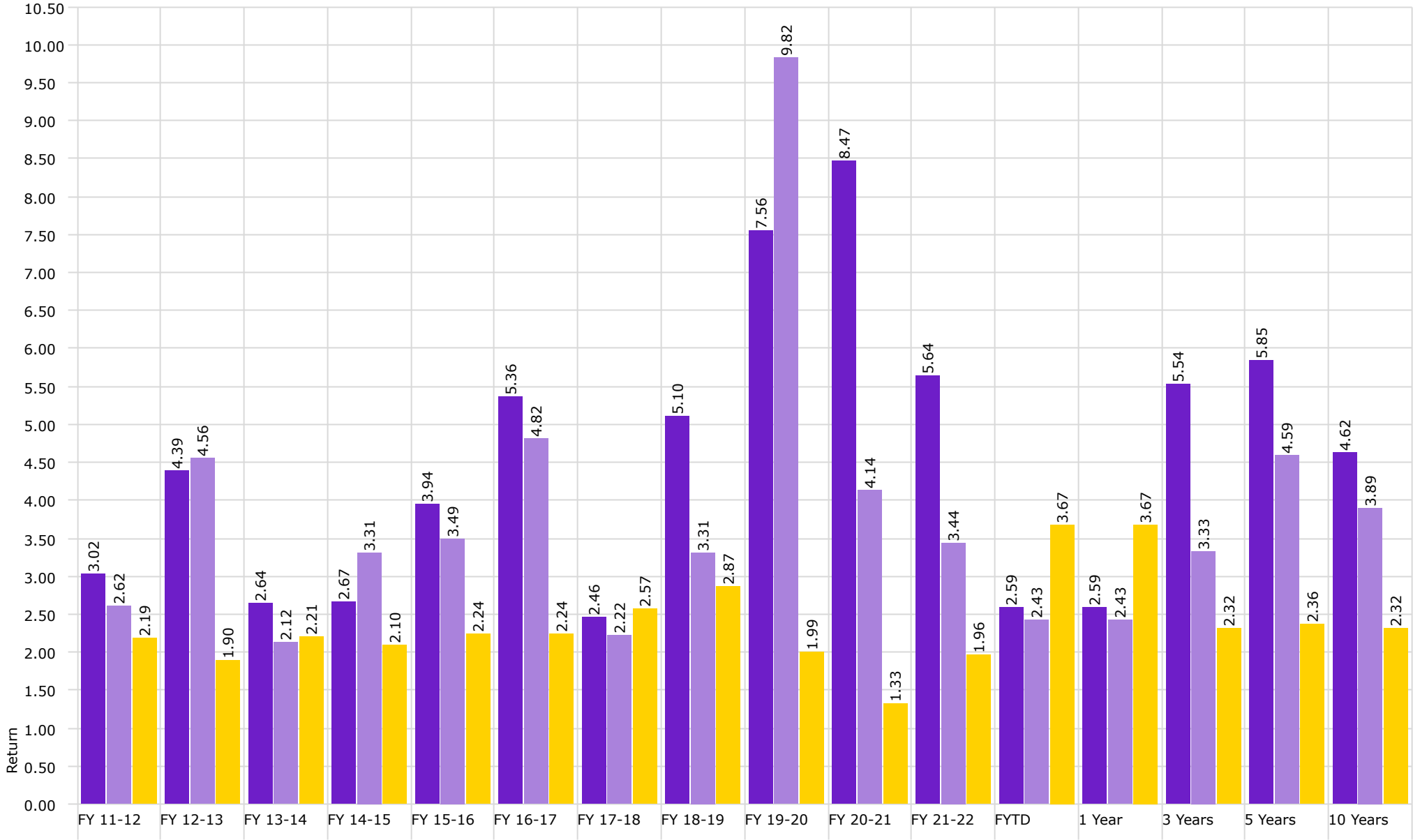


◆ Non-Ended
 ✱ Non-Ended + JPMC Savings
 ▶ Health Plan
 ✕ Modified Barclays Agg Bond Index
 ⬠ Barclays Aggregate Bond Index



Investment Management Program Endowed Accounts **Realized Yield**

As of 6/30/2023



Endowment

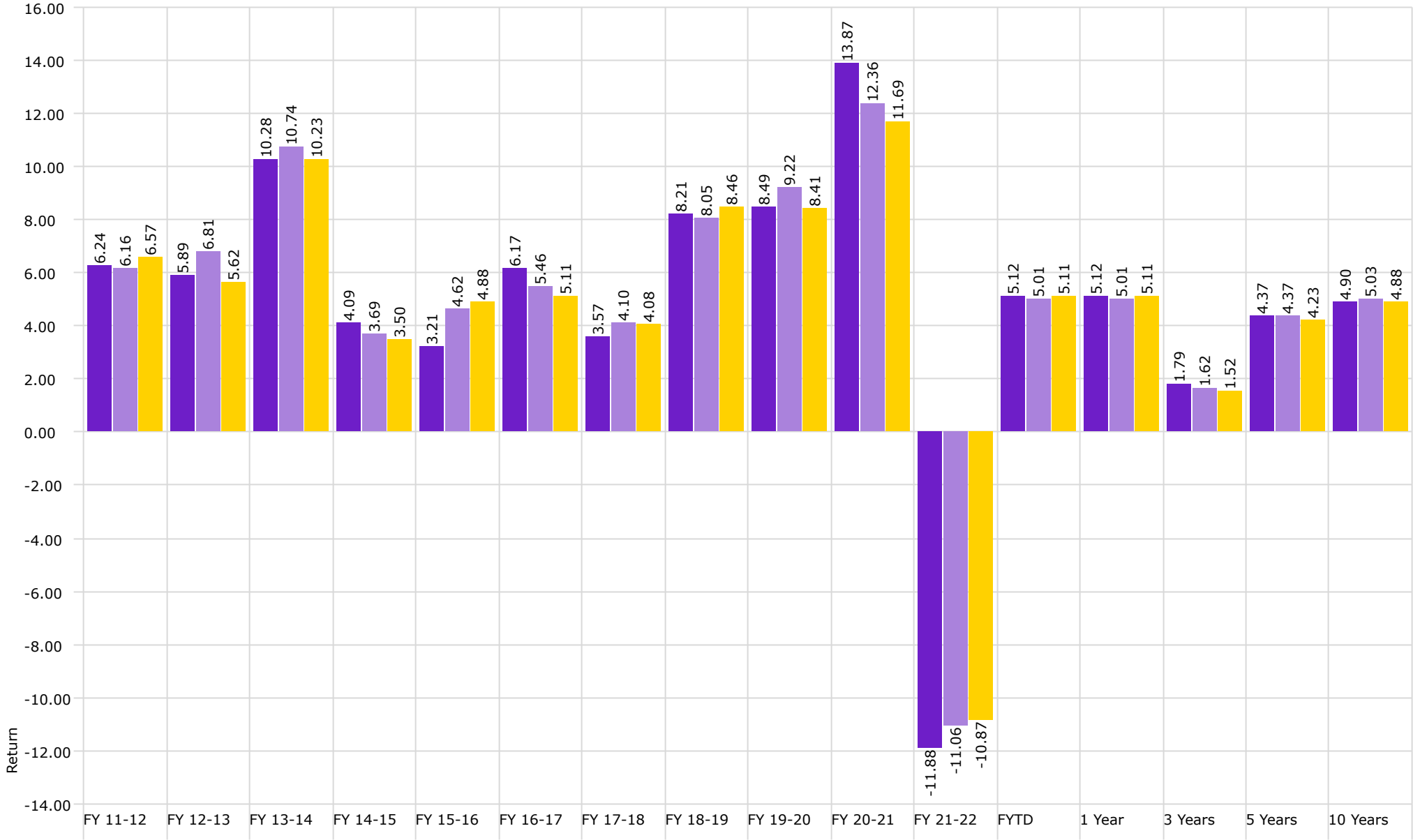
Osher

Endowed Realized Yield



Investment Management Program Endowed Accounts **Total Return**

As of 6/30/2023



Endowment

Osher

Endowed Benchmark